

## Product Datasheet



# beta Catenin Antibody

Catalog No: CY3523

Reactivity: Human, Mouse, Rat

Isotype: Rabbit IgG

Applications: WB IHC ICC/IF IP

[www.biopple.cn](http://www.biopple.cn)

### Information

**UniProt ID:** P35222

**All Names:** CATNB; CTNB1; CTNNB; catenin beta; beta catenin;

**Form:** Liquid

**Storage instructions:** Store at +4°C short term. Store at -20°C long term. Avoid freeze / thaw cycle.

**Storage buffer:** pH 7.4, 150mM NaCl, 0.02% sodium azide and 50% glycerol.

**Purity:** Affinity-chromatography

**Immunogen:** A synthesized peptide

**Molecular Wt.:** 92 kDa

### Application

WB: 1:1000-2000

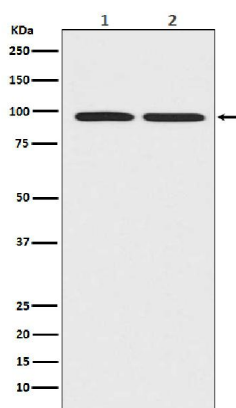
IHC: 1:50~1:200

ICC/IF: 1: 50~1:200

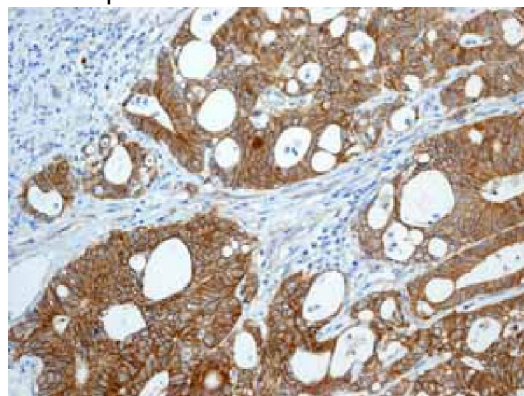
IP: 1: 50

### Background

Beta-catenin is an adherens junction protein. Adherens junctions (AJs; also called the zonula adherens) are critical for the establishment and maintenance of epithelial layers, such as those lining organ surfaces. AJs mediate adhesion between cells, communicate a signal that neighboring cells are present, and anchor the actin cytoskeleton. In serving these roles, AJs regulate normal cell growth and behavior. At several stages of embryogenesis, wound healing, and tumor cell metastasis, cells form and leave epithelia. This process, which involves the disruption and reestablishment of epithelial cell-cell contacts, may be regulated by the disassembly and assembly of AJs. AJs may also function in the transmission of the 'contact inhibition' signal, which instructs cells to stop dividing once an epithelial sheet is complete.



Western blot analysis of beta catenin expression in (1) A431 cell lysates; (2) PC-12 cell lysates.



Immunohistochemistry showing positive staining in Breast carcinoma tissue.

**For Research Use Only. Not For Use In Diagnostic Procedures.**

[www.biopple.cn](http://www.biopple.cn)