

Product Datasheet

Phospho-GSK3 beta (Ser9) Antibody



Catalog No: CY6568

Reactivity: Human

Isotype: Rabbit IgG

Applications: WB, IHC, ICC/IF

www.biopple.cn

Information

UniProt ID: P49841

All Names: glycogen synthase kinase 3 beta; Glycogen synthase kinase-3 beta; GSK-3 beta; GSK3B; GSK3beta isoform

Form: Liquid

Storage instructions: Store at +4°C short term. Store at -20°C long term. Avoid freeze / thaw cycle.

Storage buffer: pH 7.4, 150mM NaCl, 0.02% sodium azide and 50% glycerol.

Purity: Affinity-chromatography

Immunogen: A synthesized peptide

Molecular Wt.: 46 kDa

Application

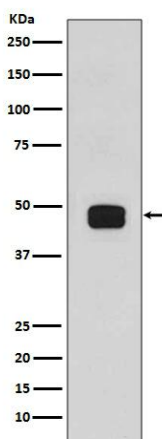
WB: 1:5000~1:10000

IHC: 1:50~1:200

ICC/IF: 1:50~1:200

Background

GSK3B a proline-directed protein kinase of the GSK family. Phosphorylates and inactivates glycogen synthase. Participates in the Wnt signaling pathway. Involved in energy metabolism, neuronal cell development, and body pattern formation .



Western blot analysis of GSK3 beta (phospho S9) expression in 293T cell lysates, treated with Calyculin A.

For Research Use Only. Not For Use In Diagnostic Procedures.

www.biopple.cn