

## Product Datasheet



# Cytochrome C Antibody

Catalog No: CY5734

Reactivity: Human Mouse Rat

Isotype: Rabbit IgG

Applications: WB IHC ICC/IF IP

[www.biopple.cn](http://www.biopple.cn)

### Information

**UniProt ID:** P99999

**All Names:** CYC; CYCS; Cytochrome c; HCS; THC4;

**Form:** Liquid

**Storage instructions:** Store at +4°C short term. Store at -20°C long term. Avoid freeze / thaw cycle.

**Storage buffer:** pH 7.4, 150mM NaCl, 0.02% sodium azide and 50% glycerol.

**Purity:** Affinity-chromatography

**Immunogen:** A synthesized peptide

**Molecular Wt.:** 14 kDa

### Application

WB 1:1000~1:2000

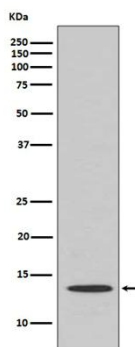
IHC 1:50~1:200

ICC/IF 1:50~1:200

IP 1:30

### Background

Cytochrome C is a well conserved electron-transport protein and is part of the respiratory chain localized to mitochondrial intermembrane space. Plays a role in apoptosis. Suppression of the anti-apoptotic members or activation of the pro-apoptotic members of the Bcl-2 family leads to altered mitochondrial membrane permeability resulting in release of cytochrome C into the cytosol.



Western blot analysis of Cytochrome C expression in Human kidney lysate.

**For Research Use Only. Not For Use In Diagnostic Procedures.**

[www.biopple.cn](http://www.biopple.cn)